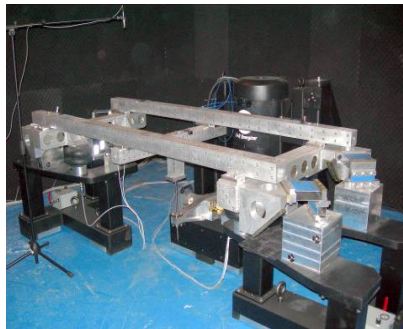


We are running a 40,000 sq. ft./4,000 sq.m. laboratory, accredited ISO 17025 by A2LA, in Jinqiao Development Area, Pudong, Shanghai.

### Capabilities

- Vibration (Sine, Random, Sine/Random); with Temp/Humidity
- Programmable Chambers
- Salt Spray



- Thermal Shock
- IR light array



- Walk-in Chambers
- Drive-in Chambers
- Acoustic Chamber



- Audio
  - BSR (Buzz, Squeak, Rattle)
- Automotive Component and Systems Focus
- Interior Systems
  - IP
  - Electronics
  - Door Panels
  - Headliners
  - Trim
  - Multi-media
  - Closures
- Electronics
  - Connectors
  - Modules
- Automotive EMC (refer to EMC insert for detail)

