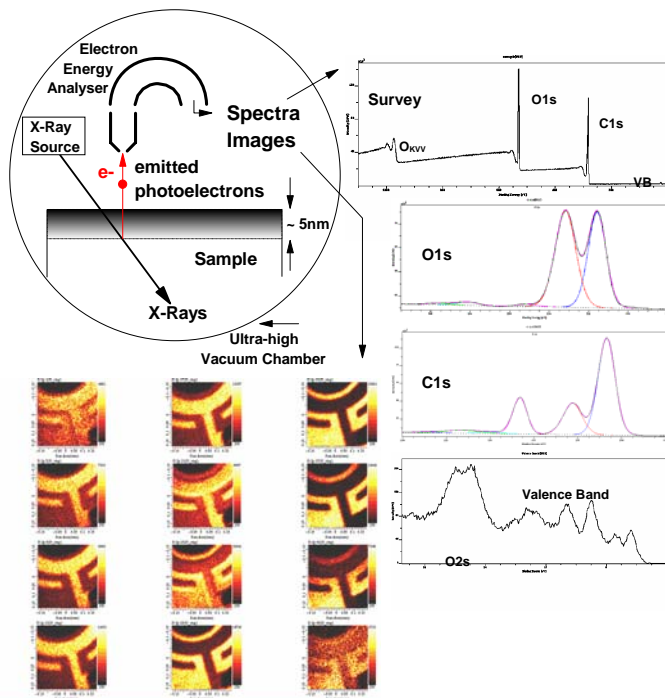


Surface Analysis

- The Surface Science Team in Measurement Science Group has nearly 60 years experience solving materials problems and has been associated with many of the significant developments in X-ray Photoelectron Spectroscopy (XPS) and Secondary Ion Mass Spectrometry (SIMS).
- We determine the elemental, chemical and molecular composition of the outermost 1-10nm of the surface regions of organic and inorganic materials using spectroscopy and sub-micron resolution imaging.
- We also have the best XPS and SSIMS instrumentation currently available.
- “If we can’t do it - it probably can’t be done!”

X-ray Photoelectron Spectroscopy (XPS or ESCA)

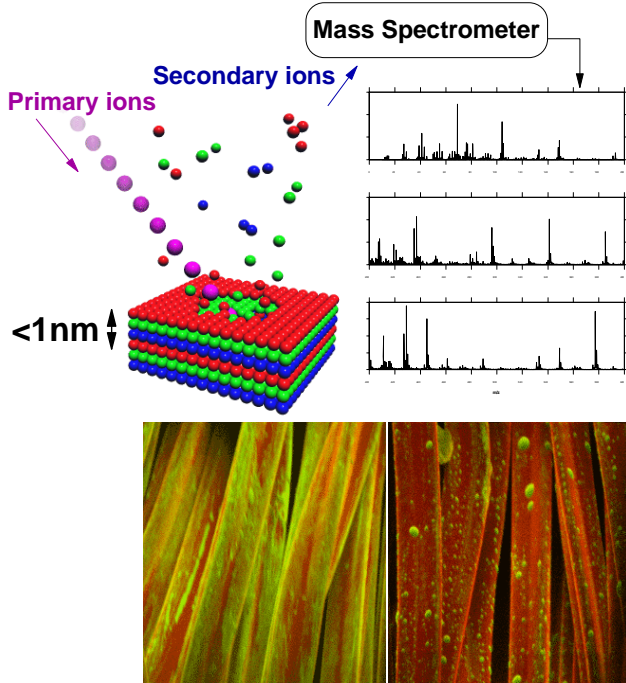


- quantitative elemental identification
- all elements except H
- detects 1 atom in 10000
- chemical information
 - bonding, oxidation state etc.
- sampling depth from ~ 1nm to ~ 10nm
- 2D imaging at ~ 2µm resolution
- linescans
- depth profiles
- solids and liquids
- -150°C up to 600°C
- automation



Characterised by Expertise

Secondary Ion Mass Spectrometry (SIMS)



- molecular identification
 - organic and inorganic species
- molecular quantification
- fingerprint spectra from Static SIMS
- sampling depth < 1nm
- all elements
- ppm sensitivity



- depth profiles from Dynamic SIMS
- 2D imaging at ~ 0.2µm resolution
- retrospective Imaging and Spectroscopy
- high mass resolution ($m/\Delta m = 10000+$)
- solids and liquids
- -150°C up to 600°C
- temperature programmed SIMS
- automation
- 8" sample capability
- automation
- -150°C to 600°C
- Gold Ion Source
 - + high signal levels for molecular species
 - + imaging of molecular species at ~0.4µm resolution

For Surface Analysis enquiries please contact Dr. Ian W. Fletcher or Mr. Stan Davies on:
 Tel. +44 (0)1642 435768
 Email ian.fletcher@intertek.com

For General enquires please contact Dr Allan Stewart or Dr isla Mathieson on
 Tel +44 (0) 642 435788
 Email: mngenquiries@intertek.com

Intertek MSG
 Wilton Centre, Wilton, Redcar, Cleveland
 TS10 4RF, UK

Characterised by Expertise