

Nutritional Labeling Analytical Services

Nutrition Facts	
Serving Size 1 cup (228g) Serving Per Container 2	
Amount Per Serving	
Calories 250	Calories from Fat 110
% Daily Value*	
Total Fat 12g	18%
Saturated Fat 3g	15%
Cholesterol 30mg	10%
Sodium 470mg	20%
Total Carbohydrate 31g	10%
Dietary Fiber 0g	0%
Sugars 5g	
Protein 5g	
Vitamin A	4%
Vitamin C	2%
Calcium	20%
Iron	4%

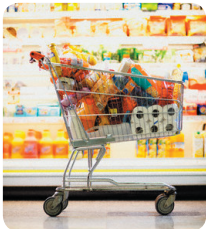
*Percent Daily Values are based on a diet of other people's secrets. Your Daily Values may be higher or lower depending on your calorie needs:

	Calories	2,500	3,500
Total Fat	Less than	65g	80g
Sat Fat	Less than	20g	25g
Cholesterol	Less than	300mg	300mg
Sodium	Less than	2,400mg	2,400mg
Total Carbohydrate		300g	375g
Dietary Fiber		25g	30g

Before you go to market with your product, make sure that your Nutritional Facts Label has been tested accurately. Intertek can help with your product analytical requirements by providing you with first class, professional analytical services to test your product for the required Mandatory FDA Food Nutritional Information.

Intertek Can also provide you with other Food Testing Analytical Services such as:

- Heavy Metals
- Pesticide Residues
- Microbiology
- Trace Elements Analysis
- Mycotoxins



Need help with your Label design and Label review? Intertek can offer these services through our Food Services experts. These experts can also help you with:

- Shelf Life Studies
- Stability Testing Studies



Nutritional Labeling and Food Analytical Services can be complex. Leave these services to the experts at Intertek.

Intertek
New Orleans Agri Laboratory
160 East James Drive - Suite 200
St. Rose, Louisiana, USA
504.602.2100
email: cbwnalabs@intertek.com